

**Applied Technology Services**  
1210 D Street, Rock Springs, WY 82901 (307)352-7292



Meter Name: MAPCO ML 58  
Field Name: DISTRIBUTION  
Analyst: PUTNAM

Meter Loc. #: 2436  
Cylinder Pres: 150 psig  
Line Pres #: 158 psig

Report Date: 03/04/2013 11:20:00  
Sample Date(s): 02/04/2013 to 03/04/2013  
Flowing Temp: 38° F

**Gas Analysis by Chromatograph**

NAME	MOLE%	BTU	SG	GPM
Nitrogen	0.2283	0	0.0022	0
Methane	93.7072	948.6324	0.519	0
CO2	0.3757	0	0.0057	0
Ethane	4.7217	83.7532	0.049	1.2624
H2S	0	0	0	0
Propane	0.6082	15.3383	0.0093	0.1675
i-Butane	0.0987	3.2171	0.002	0.0323
n-Butane	0.125	4.0873	0.0025	0.0394
i-Pentane	0.0387	1.5519	0.001	0.0141
n-Pentane	0.0309	1.2416	0.0008	0.0112
Hexanes	0.0311	1.4825	0.0009	0.0128
Heptanes	0.0198	1.092	0.0007	0.0091
Octanes	0.013	0.8142	0.0005	0.0067
Nonanes	0.0017	0.1192	0.0001	0.001
<b>IDEAL TOTAL:</b>	<b>100.0</b>	<b>1061.3298</b>	<b>0.5937</b>	<b>1.5565</b>

**Gross BTU/Real Cu Ft. @ 60 deg F**

Pressure =	14.73	14.65	15.025
Dry =	1063.7747	1057.984	1085.1292
Sat. =	1046.5069	1040.7145	1067.8678
Actual =	1063.7747	1057.984	1085.1292
Real S.G. =	0.594793	0.594785	0.59482
Gas Comp. =	0.997702	0.997714	0.997656

**Gasoline Content**

Pressure =	14.73
Propane GPM =	0.1675
Butane GPM =	0.0717
14# Gasoline GPM =	0.06
26# Gasoline GPM =	0.0842
Total GPM =	1.5565

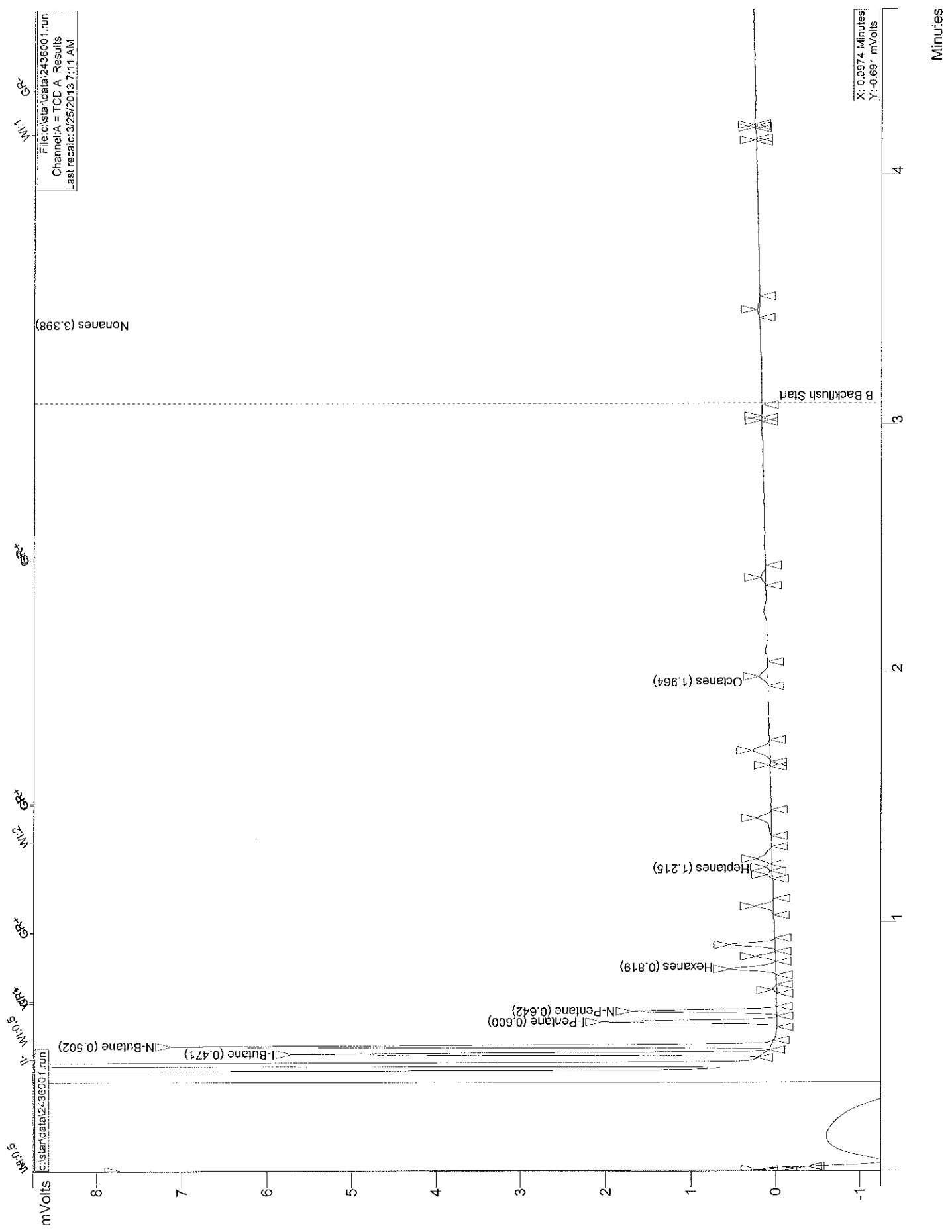
**Sulfur Content**

Mercaptans ppm = N/A  
H2S ppm = N/A

**Dewpoints**

H2O #/mmcf = N/A  
Hydrocarbon °F = N/A  
@ psig = N/A

Comments:

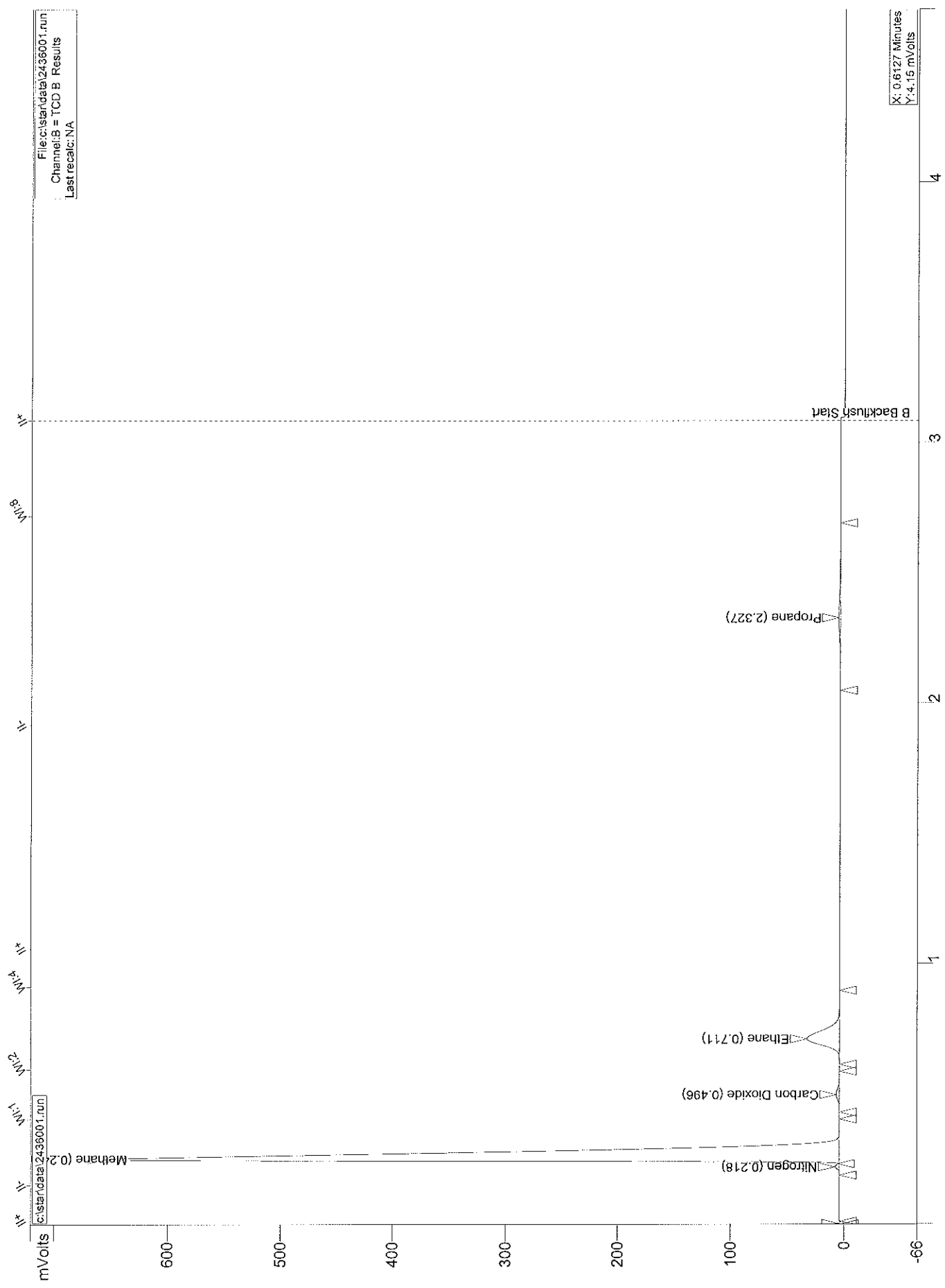


File: c:\standata\2436001.run  
 Channel: A = TCD A Results  
 Last recal: 3/25/2013 7:11 AM

X: 0.0374 Minutes  
 Y: -0.691 mVols

Minutes

File: c:\standarda\2436001.run  
Channel: B = TCD B Results  
Last recal: NA



X: 0.6127 Minutes  
Y: 4.15 mVolts

Minutes